

⚠️ WARNING

To reduce the risk of drowning, entrapment, falls, paralysis, electrocution, or other serious injury or death:

Dealer/Installer: Give manual to homeowner.

Installer: Read "**Safe Installation**" on page #2 and all instructions before beginning. For proper assembly and installation, instructions must be followed completely.

Homeowner: Read "**Safe Use**" on back cover before using. Save these instructions.

Installation must comply with local codes and may require permits.

MODEL #7000X ELIMINATOR A-FRAME LADDER

**Adjusts to fit pools 48" to 54"
FOR RIGID-FRAMED POOLS ONLY**

Ladder must be attached to pool frame - do not use with inflatable pools.

SWING UP SECTION OF LADDER MUST BE INSTALLED ON OUTSIDE OF POOL

WEIGHT LIMIT 300 LBS.

ASSEMBLY, INSTALLATION AND USE MANUAL

Assembly video available online: www.conferplastics.com



The Anti-Entrapment Barrier is included in this ladder as required by ANSI/APSP requirements. The Anti-Entrapment Barrier is NOT intended as a substitute for competent adult supervision. If you would like to purchase the barrier, please visit our website at: www.conferladders.com



Proudly Made in U.S.A. by

CONFER
plastics inc.

Model #7000X ELIMINATOR A-FRAME LADDER

Ladder must be attached to pool frame - DO NOT USE with inflatable pools

If missing parts call - Toll free U.S./Canada - 800-635-3213 or www.conferladders.com

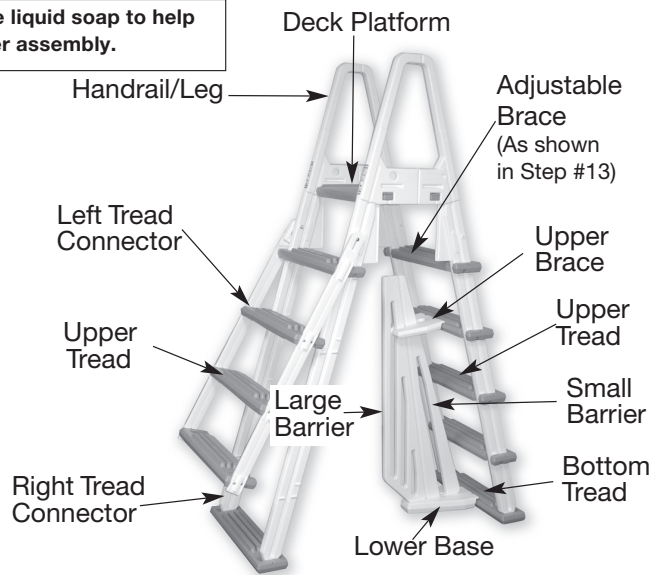
Parts List

- 4 - Handrail / Leg
- 2 - Bottom Treads
- 8 - Upper Treads
- 1 - Left Tread Connector
- 1 - Right Tread Connector
- 1 - Deck Platform with 4 wedges attached

Hardware Pack

- 26- #10 x 1-1/4" Screw
- 2 - 1/4 - 20 x 3-1/4" Bolt
- 6 - 1/4" Washer
- 2 - 1/4" Nylon Nut
- 2 - 1/4 - 20 x 2-1/4" Bolt
- 2 - Hex Nut
- 4 - Push in Plug (white)
- 2 - Adjustable Braces
- 1 - Cable Lock Set

Use a little liquid soap to help with ladder assembly.



Tools Needed for Assembly

- * - Hammer or mallet
- * - Cordless Drill
- * - 1/8" & 9/32" Drill bits
- * - Phillips Screwdriver
- * - Pliers
- * - 7/16" wrench or adjustable wrench
- * - Liquid soap or lubricant
- * - Battery operated drill motor

Barrier Parts List

(Included in Hardware Pack)

- 4 - #10 x 1-1/4" screws
- 1 - Strip of 4 Foam Pads
- 1 - Large Barrier Section
- 1 - Small Barrier Section
- 1 - Upper Brace
- 1 - Lower Base



IMPORTANT: LADDER ADAPTER KIT

LAK kit fits Confer A-frame ladders for use with non-traditional metal framed swimming pools with a wall height of 48" - 54".

Use with models: 7100b, 7100x, 7000x, 7000b, 7200 and 8100X.

Not for use with inflatable pools.

OPTIONAL CONVERSION KIT

To easily convert your A-frame ladder to a deck/inpool ladder order our #CK100-X conversion kit. The kit includes all parts and hardware needed. Deck cannot be higher than the pool top ledge.

Safe Installation

WARNING

To reduce the risk of electrocution, drowning, entrapment, falls, or other serious injury or death:

Check building codes/permitting. Consult your local Building Department before installation of your pool and equipment. Pool/equipment installation must comply with the codes of the authority having jurisdiction and may require permits (e.g., building, plumbing, electrical, zoning, etc.).

Use for intended purpose only

- Use only as a swimming pool ladder.
- This ladder is designed and manufactured for a specific pool wall height and/or deck of the pool - check product specification and the height of your pool.

Check that you have all required parts. Check the contents of the carton with the Parts List for this ladder. All parts and hardware are required. If any parts are missing, **DO NOT attempt to assemble or install the ladder.** Instead, call Toll Free U.S. - 800-635-3213 or visit our web site at www.conferladders.com for assistance.

Select an appropriate location - The ladder must be located on a level, solid base and in a location that will be in full view of competent adult supervision when in use.

Follow all instructions

- For stable, correct assembly and installation, all instructions must be followed completely and in the sequence shown.
- Follow the manufacturer's recommendations for the safe use of all hand tools and equipment used during installation.

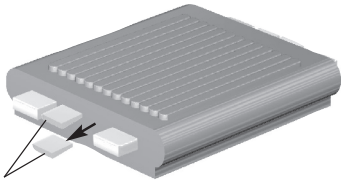
Cordless drill only - no corded drills near pool. Use a cordless drill for assembly and installation. To reduce the risk of electrocution, NEVER use a corded drill in or around a pool.

Lift safely. When lifting awkward or heavy loads, have another person help you.

Double check after installation

- Before using the product, after assembly and installation, go over the instructions and procedures again to make sure nothing has been overlooked.
- Make sure that safety labels are installed and legible.

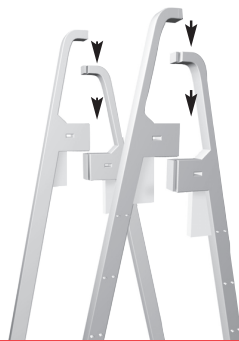
Step 1.



Twist and save. Pliers may be useful to aid in removal.

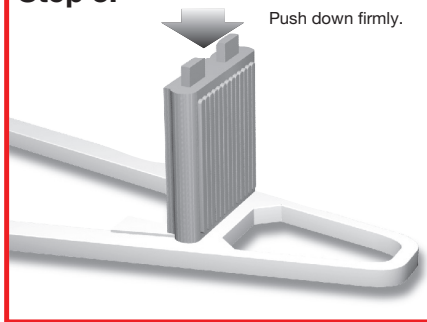
IMPORTANT: Remove the wedges from the deck platform protrusions and SAVE for step 5.

Step 2.



Slide the handrail/ legs together as shown. Apply liquid soap or spray lubricant to aid assembly.

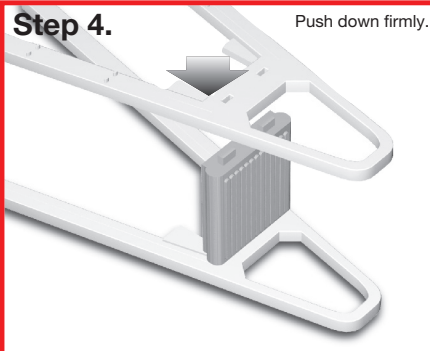
Step 3.



Push down firmly.

Place one handrail/leg assembly on a clean flat surface and push the deck platform protrusions in the opening.

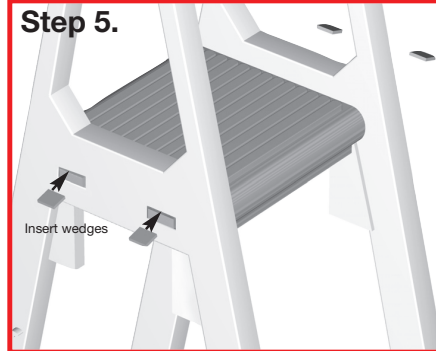
Step 4.



Push down firmly.

Repeat the process with the second handrail/ leg assembly, pushing firmly onto the deck protrusions to ensure a secure fit.

Step 5.



Insert wedges

Insert the four wedges that were saved from step 1, into the top of the openings as shown.

Step 6.

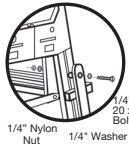


Slide five upper treads into position so they are resting on the double nubs of the legs (as shown in the diagram). Using a cordless drill, secure the treads to the legs using the #10 x 1-1/4" screws (two per tread), through the pre-drilled holes.

Step 7. Slide the three remaining upper treads into position on the ladder legs.

WARNING! Using a corded drill near pool may result in electrocution.

Step 7a.



1/4" Nylon Nut 1/4" Washer

Position the right and left hand tread connectors onto the ends of the treads and fasten them to the ladder legs with the hardware as shown in diagram 7a above. Tighten the hardware securely but do not over tighten, to allow treads to swing up easily.

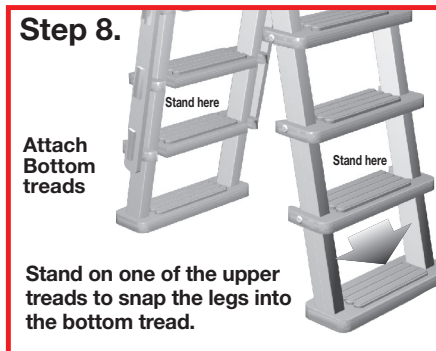
Step 7b.



Tread connectors

Attach the tread connector to the ends of each tread using #10 x 1-1/4" screws (four per tread). Note: the holes in the tread connectors will not line up with the holes in the ends of the treads. Simply drive the screws into the ends of the treads.

Step 8.

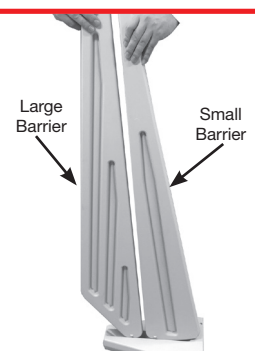


Attach Bottom treads

Stand on one of the upper treads to snap the legs into the bottom tread.

Step 9.

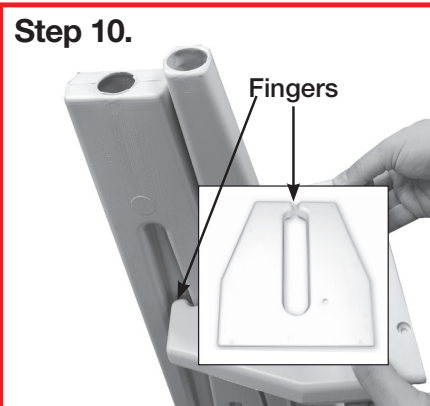
Snap Small and Large Barrier Sections into slots on Lower Base as shown.



Large Barrier

Small Barrier

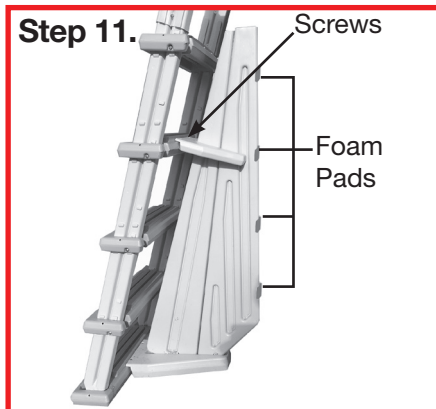
Step 10.



Fingers

Separate Barrier sections at the top slightly and position Upper Brace over Small Barrier Section. Next, spread the "fingers" on the Upper Brace and slide into position on the Large Barrier Section.

Step 11.

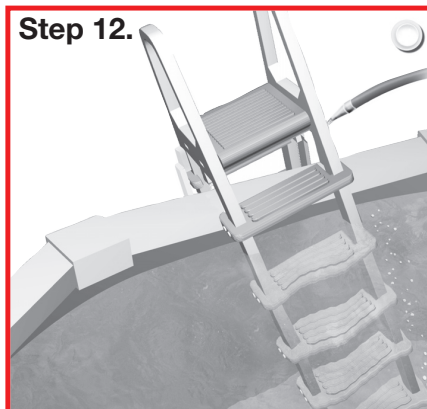


Screws

Foam Pads

Place the Base and Brace into position, centered, on the bottom and fourth treads of the ladder. Install the four (4) #10 x 1-1/4" screws (included in hardware pack) on a slight angle, first in the Upper brace, then in the Lower Base. Install the self-adhering foam strips to the Large Barrier Section as shown in diagram.

Step 12.



Place the ladder in the pool and fill legs with water through the openings with a hose. Then plug the holes using the four push in plugs. Tilt it so the air is released from all the submerged treads.

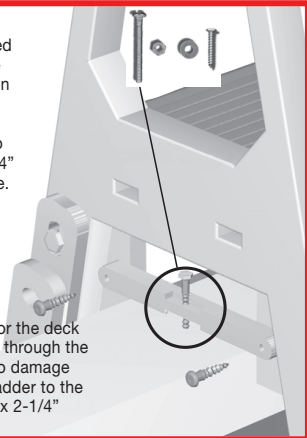
WARNING! Verify that your chosen location is level, has a solid base, and will be in full view of competent adult supervision when in use. Ladder MUST be filled with water to prevent floating.

Step 13.

Locate the ladder at the desired position on the pool and place one of the adjustable braces on the side of the ladder so that it rests on the top of the pool. Secure the adjustable brace to the ladder with two #10 x 1-1/4" screws. Repeat for other brace.

WARNING! Using a corded drill near pool may result in electrocution.

Using the braces as locators (or the deck platform), drill two 9/32" holes through the pool top seat. Be careful not to damage liner or pool wall. Fasten the ladder to the pool top using the two 1/4-20 x 2-1/4" bolts, washers and hex nuts.



WARNING! For Maximum stability, the ladder must be fastened to the top of the pool.

MAINTENANCE: Check the cable lock for proper operation and lubricate if necessary.

WINTERIZING: Unfasten the ladder from pool top seat and remove from the water. Remove the plugs and lay ladder on its side to drain. It will take several minutes for the water to drain out of the ladder rails and treads. A small amount of water left in ladder will not cause any damage. Replace the plugs so they won't get lost. To reinstall, see installation instructions Step 12: Placing the ladder in pool, page 3.

Safe Use

WARNING

To reduce the risk of drowning, entrapment, falls, paralysis, or other serious injury or death:

Use ladder properly.

- No diving or jumping from ladder - shallow water; risk of paralysis or death.
- FOR ENTRY/EXIT OF POOL, FACE THE LADDER AT ALL TIMES.
- ONE PERSON ON THE LADDER/STAIR AT A TIME.
- To reduce the risk of entrapment or drowning, DO NOT swim through, behind or around ladder.
- Illuminate the ladder when using the pool at night.

Weight limit - 300 lbs maximum. Exceeding maximum weight may cause the ladder to fail.

Secure ladder when not in use. When pool is NOT IN USE, keep outer treads in the up position and locked with the Cable Lock. (See "Swing Up Instructions", page 4.)

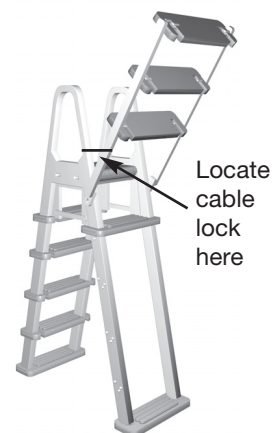
Watch children at all times when they are in or around water to help prevent drowning.

BE SURE AND SAFE. The manufacturer **IS NOT** responsible for improper assembly Installation and use.

SWING UP INSTRUCTIONS:

WARNING! When pool is NOT IN USE, keep the outer treads in the up position and locked with the cable lock.

To swing up the outer treads, stand on the bottom tread, grasp the underside of the second lowest tread and swing it out toward you. Swing them up until the tread connectors drop into the preformed locks on each leg and stay in the upright position. To lower the treads lift them straight up to clear the locks and carefully swing them down toward you.



CONFER PLASTICS INC. FIVE YEAR WARRANTY

Confer Plastics Inc. warrants their swimming pool ladders and steps to be free from defects in workmanship for five years from date of purchase.

DO NOT RETURN DEFECTIVE PART TO DEALER

E-MAIL CONFER PLASTICS AT: LADDERS@CONFERPLASTICS.COM
A PICTURE [S] OF DEFECTIVE PART, A BRIEF DESCRIPTION OF PROBLEM,
PROOF OF PURCHASE AND YOUR CONTACT INFORMATION.

INFORMATION MAY ALSO BE FAXED TO CONFER PLASTICS AT: **716-694-3102**
OR MAILED TO THE ADDRESS BELOW. UPON REVIEW OF THE INFORMATION YOU
WILL BE NOTIFIED IF PART IS COVERED UNDER THE WARRANTY AND
THE SHIPPING/HANDLING CHARGES.

This warranty gives you specific legal rights, and you may also have other rights which may vary from state to state.

Confer Plastics Inc., 97 Witmer Road, North Tonawanda, N.Y. 14120-2421

MADE IN THE USA



CONFER
plastics inc.

97 Witmer Road
North Tonawanda, New York 14120-2421
Toll Free U.S. 800-635-3213
FAX 716-694-3102
www.conferladders.com